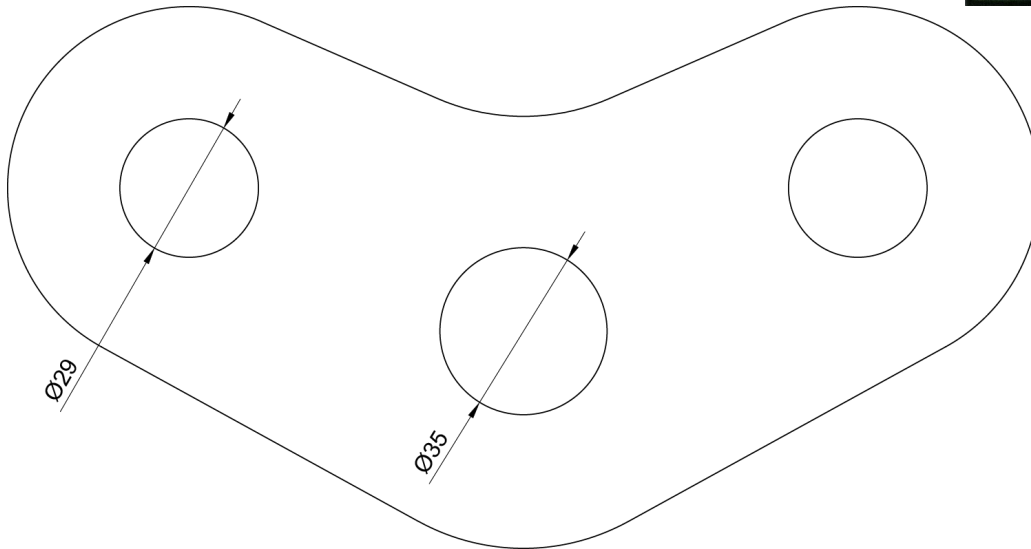


Operating instructions (original version)

These operating instructions must be read and understood completely before starting work. It must be always available at the place of use.



Content

| | | |
|-----|--|---|
| 1. | Product Overview: | 2 |
| 2. | Key Features: | 3 |
| 3. | Specifications: | 3 |
| 4. | Instructions for Use: | 3 |
| | Conversion to 2-Point Spreader Beam:..... | 3 |
| | Load Equalization:..... | 3 |
| 5. | Handling | 3 |
| 6. | Maintenance:..... | 4 |
| 7. | Regular inspections..... | 4 |
| 8. | Extraordinary Inspection..... | 4 |
| 9. | Markings | 5 |
| 10. | Address of the manufacturer and the supplier | 5 |
| | Warnings:..... | 5 |

1. Product Overview:

The Aluex Link is a triangular-shaped device designed to link together the legs of a 4-point cross spreader beam, transforming it into a 2-point spreader beam. It can also function as a load equalizer, allowing you to distribute the load between one or two lifting points.

The equipment complies with the requirements of Directive 2006/42/EC (Machinery Directive) and EN 13155 and therefore bears the CE mark. The corresponding EC declaration of conformity (CE declaration) is available.



Outdoor use is permitted.

| Product | 4-Point to 2-Point Spreader | 2-Point to 4-Point Lift | 4-Point to 8-Point Lift |
|----------|-----------------------------|-------------------------|-------------------------|
| Aluex5 | Yes | Not Applicable | Yes |
| Aluex10 | Yes | Not Applicable | Yes |
| Aluex10+ | Yes | Not Applicable | Yes |
| Aluex15 | Yes | Not Applicable | Yes |
| Aluex18+ | Yes | Not Applicable | Yes |
| STR5 | Not Applicable | Yes | Not Applicable |
| STR9 | Not Applicable | Yes | Not Applicable |
| STR9+ | Not Applicable | Yes | Not Applicable |
| Aluex25 | No | Not Applicable | Yes |
| Aluex40 | No | Not Applicable | Yes |
| Aluex50 | No | Not Applicable | No |

Table 1 Aluex Link compatibility with other Aluex products.



Figure 2: Aluex Link in use with Aluex18+

| Type/Article number | Size | Dead weight |
|---------------------|--------------------------|-------------|
| Aluex Link | Size: 216 x 113,5 x 25mm | 2.88 kg |

Table 2: Specifications

| Hole Diameter | Max Recommended Shackle size |
|---------------|------------------------------|
| 29 mm | 6,5T |
| 35 mm | 9,5T |

Table 3: Hole diameter & recommended shackle sizes

2. Key Features:

- **Versatility:** Can be used to convert a 4-point cross spreader beam into a 2-point spreader beam or to equalize the load between one or two lifting points.
- **Triangular Shape:** The triangular design provides stability and even distribution of loads.
- **Compatibility:** Designed specifically for Aluex cross spreader bars but can be utilized with various lifting equipment.

3. Specifications:

- Maximum Load Capacity: 10,000 kg
- Designed for 16,000 load cycles
- Allowed Temperature Range: -35°C to 50°C

4. Instructions for Use:

Conversion to 2-Point Spreader Beam:

- Fold the legs of the Aluex cross spreader together (legs are parallel).
- Attach the Aluex Link to two opposite lifting points using appropriate lifting hardware (shackles, hooks, etc.).
- Ensure that the Aluex Link is securely attached using the appropriate shackles, or hooks.
- Verify the stability of the load before lifting.

Load Equalization:

- Determine whether you need to equalize the load between one or two lifting points.
- Attach the Aluex Link to the lifting point(s) on the object being lifted using chains or straps.
- Connect the lifting equipment (crane hook, hoist, shackle etc.) to the Aluex Link.
- Avoid sudden movements and ensure the load is well balanced when lifting.

5. Handling

- **Check the load to be lifted for cracks and damage. A cracked or damaged load must not be lifted and transported. There is a danger of falling!**
- **Never put limbs under or between the load and the lifting and slinging equipment! There is a risk of crushing!**
- **Lifting and transporting persons or loose individual parts is prohibited!**
- **Only place the load and load-carrying equipment on stable and level ground, otherwise there is a risk of falling, tipping, or slipping!**



- Do not use in aggressive environments (acidic or similar)!
- Do not use the Alux Link for purposes other than its intended use.

Before each use, check the spreader in particular for the following discard criteria:

| Alux Link | OK | Not OK |
|---|----|--------|
| No deformations and cracks visible on the Link | | |
| Lifting accessories show no wear, are not deformed and are crack-free | | |
| Rigging shows no wear, are not deformed and are crack-free | | |
| Markings according to chapter 9 are present and undamaged | | |
| No changes to the product (e.g., foreign welds) are present | | |

6. Maintenance:

- Regularly inspect the Alux Link for signs of wear, corrosion, or damage. Replace any damaged components immediately.
- Keep the Alux Link clean and free from debris to maintain optimal performance.
- Store the Alux Link in a dry and secure location when not in use to prevent damage.

If one of the above criteria is answered with "Not OK", the use of the Link no longer permitted! Please get in touch with us. We will assist you with a professional repair.

7. Regular inspections

Load handling devices must be inspected once a year by a competent person. Depending on the conditions of use, inspections may be required at shorter intervals. We provide an inspection sheet. The regular inspection must be noted in the inspection log.

8. Extraordinary Inspection

After cases of damage or special incidents that may affect the load-bearing capacity, the link must be subjected to an extraordinary inspection by a competent person.

9. Markings

The following markings are attached to the link and must be permanently visible. If markings are removed or damaged, please contact us.



| Quantity | Type | Content | Illustration |
|----------|-----------------|---------------------------------------|---|
| 1 | Punched in link | Serial number and year of production |  |
| 1 | Sticker | Type, serial number, address, CE-Mark |  |

Table 1: Markings of the spreader

10. Address of the manufacturer and the supplier

| Manufacturer | Supplier |
|-------------------|----------|
| Aluexbeams | |
| Ampumaradantie 1 | |
| 68600 Pietarsaari | |
| Finland | |

Table 2: Addresses

Warnings:

Failure to follow the instructions provided in this manual may result in serious injury or damage.

Consult a qualified engineer or lifting specialist if you have any doubts about the suitability or safety of using the Aluex Link for specific lifting applications.